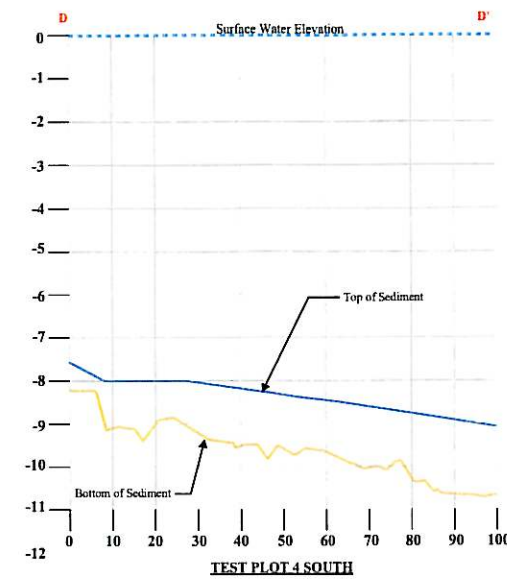
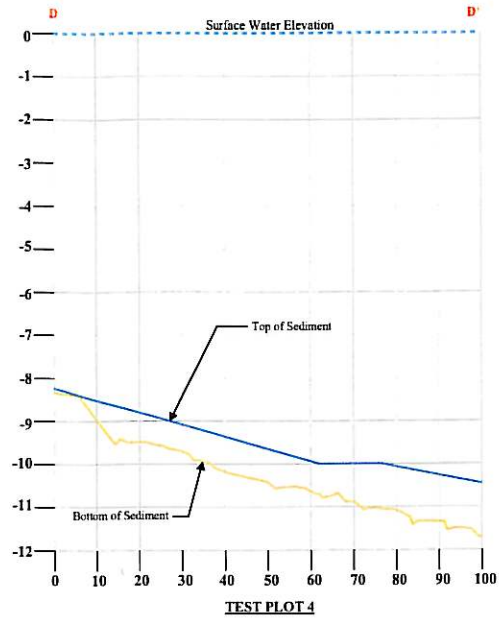
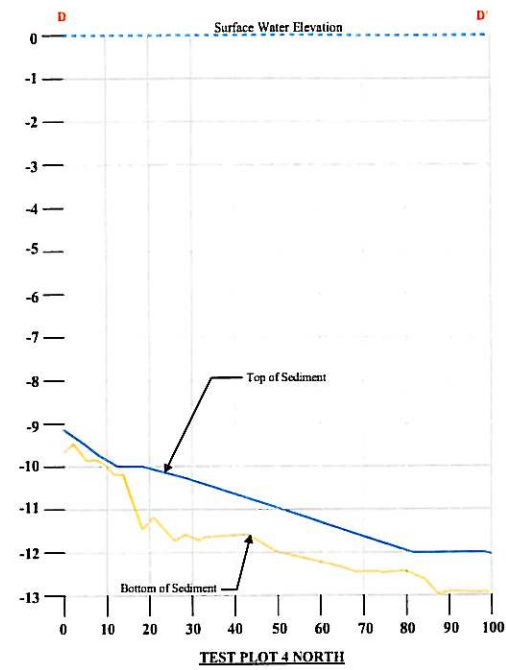
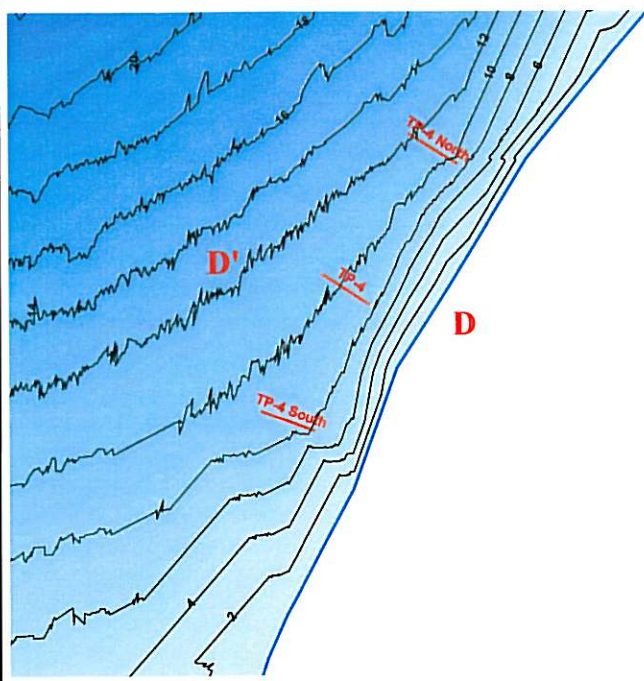
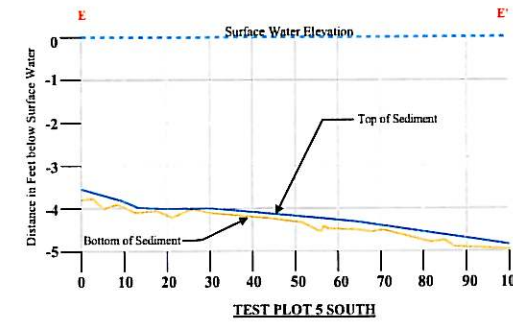
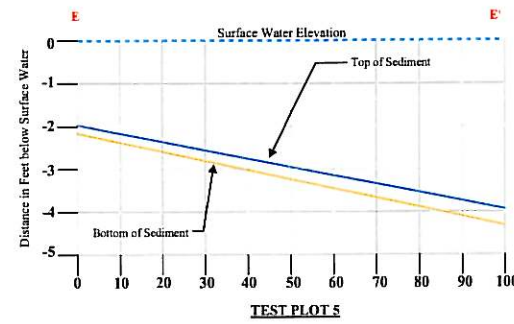
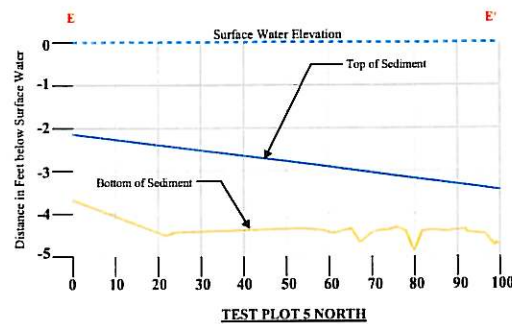
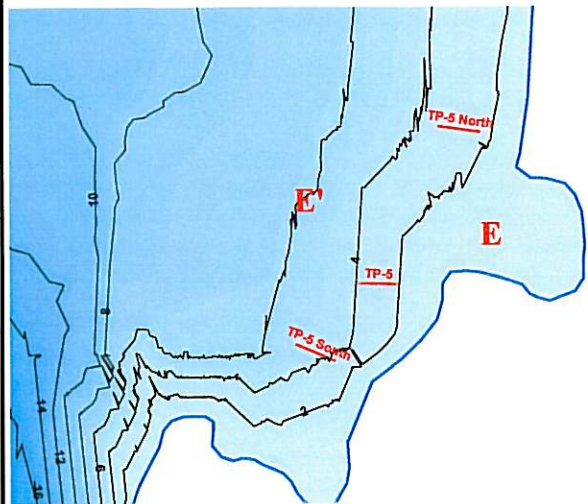


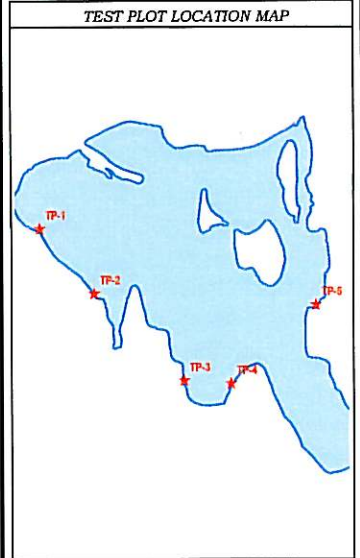
File: P:\0418\Projects\0418\02\SODUS\Cross\_Section2.mxd



**Cross Section Scales:**  
Horizontal: 1" = 20' Vertical: 1" = 2'



**Cross Section Scales:**  
Horizontal: 1" = 20' Vertical: 1" = 2'



- SOURCES:**
- Bathymetric data collected on lake by Princeton Hydro personnel in May, 2005 using a Knudsen 320BP Echosounder with Hypack Software and a Trimble Pro-XRS GPS unit.
  - In-lake sediment contouring and grid analysis derived from collected bathymetric points using ESRI's ArcGIS 3-D Analyst module, contours in feet.
  - Cross Sections. All contour and bathymetric point data was imported into AutoCAD Civil 3D, where cross sections were extracted from the data. All cross sections were exported out of AutoCAD and into ArcGIS for display purposes.



**PREPARED FOR:**  
**THE WAYNE COUNTY SOIL AND WATER CONSERVATION DISTRICT**  
Wayne County  
New York

SCIENTISTS AND ENGINEERS  
1108 OLD YORK ROAD, SUITE 1  
P.O. BOX 720  
RINGOES, NEW JERSEY 08551  
PHONE: 908.237.5660  
FAX: 908.237.5668  
WWW.PRINCETONHYDRO.COM

**PROJECT NAME/LOCATION:**  
THE GREAT SODUS EMBAYMENT COASTAL RESOURCE PRESERVATION AND WATERSHED ENHANCEMENT PLAN  
WAYNE COUNTY, NEW YORK

**DRAWING NAME:**  
CROSS SECTIONS SHEET 2

- Legend**
- Cross Sections**
- Surface Water Elevation
  - Top of Sediment
  - Bottom of Sediment
- Test Plot Inset Map**
- Test Plot Locations
  - Sodus Bay Boundary